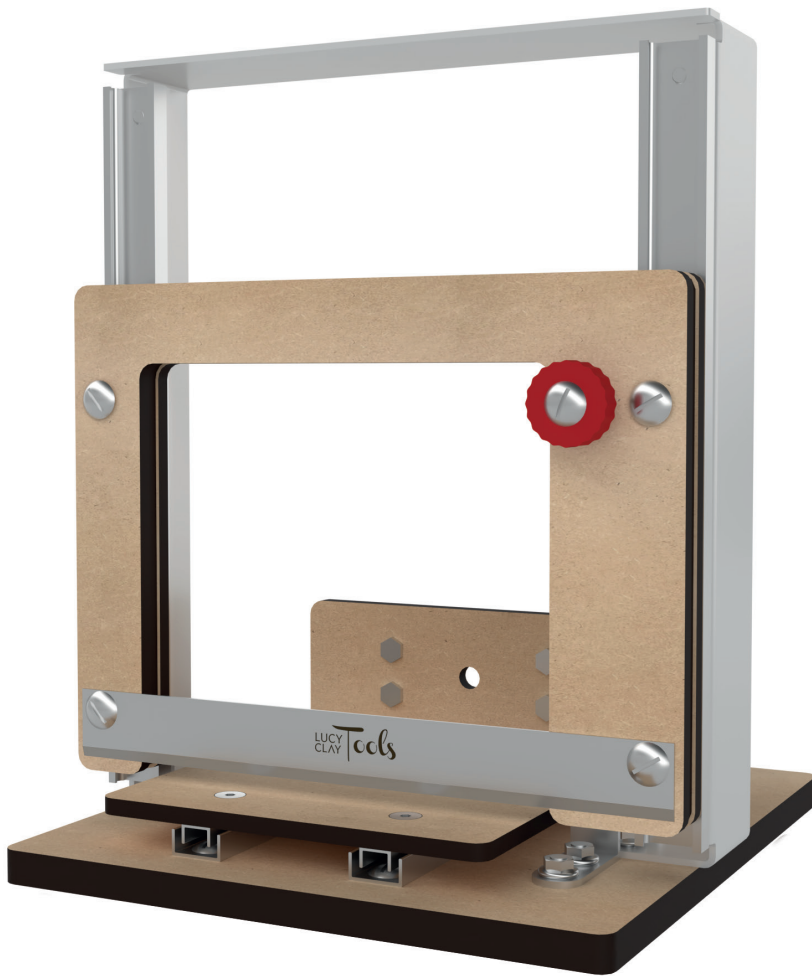
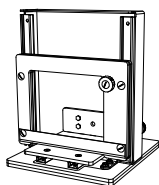


LUCY CLAY[®]

LC SLICER ECO



 SEE REVERSE SIDE FOR ASSEMBLY INSTRUCTIONS



LUCY CLAY
LC SLICER

Made by LC Tools s.r.o.
support@lucyclay.com | www.lucyclay.com



ONLINE MAUAL
& ASSEMBLY VIDEOS
www.lucyclay.com/lc-manual

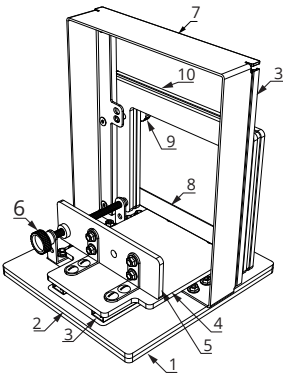


LEARN MORE
ABOUT OUR TOOLS
www.lucyclay.com

THE ACTUAL PRODUCT MAY VARY FROM THE IMAGES

BASIC PARTS OF LC SLICER

- 1. Baseplate Frame
- 2. Baseplate
- 3. 4x Rail Glides
- 4. Slicing Platform
- 5. Backstop Support
- 6. EASE Module V4
- 7. Frame
- 8. Slicer Blade
- 9. SAFETY Knob
- 10. Front frame deckel / Handle



A full turn of the knob moves the platform 1 mm forward.

SAFETY INSTRUCTIONS

- 1. The LC Slicer should only be used for slicing polymer clay.
- 2. Before using the LC Slicer, make sure to place it on a firm horizontal surface/anti-slip mat.
- 3. Once you finish working with the LC Slicer, make sure to put the Slicer Blade down and securing Blade with the red SAFETY Knob tightened to secure. This should prevent accidental contact of the Slicer Blade and the hand. Cover the blade by the red magnetic sheet with the simple scale to prevent any interaction with the blade's edge which is very sharp.
- 4. The LC Slicer is not intended for children and must not be used by children unattended by a responsible adult.
- 5. The Slicer Blade is very sharp and can easily cause a cut or injury. To lift the blade, use the handle only.
- 6. Keep the blade clean with no residues of polymer clay. When cleaning the Blade, pay special attention and never clean with bare hands or your fingers, use a cloth/wipe instead in a downward motion. Using a tong type tool to hold cloth/wipe is recommended.
- 7. Always follow the safety instructions for the protection of yourself and of the others.
- 8. LC Tools s.r.o. is not responsible for any injuries or damages resulting from inappropriate handling of LC Slicer.

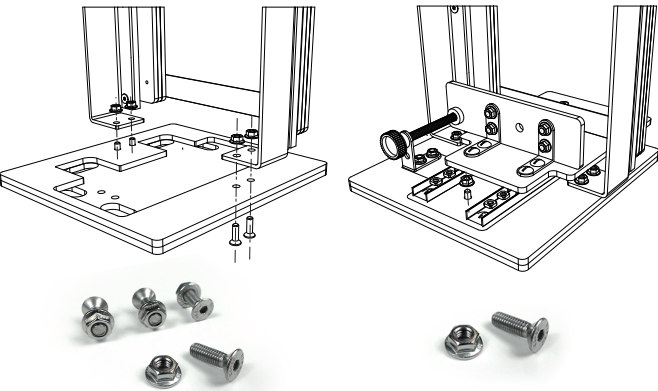
QUICK INSTALLATION

1. INSTALLATION OF FRAME ON BASEBOARD

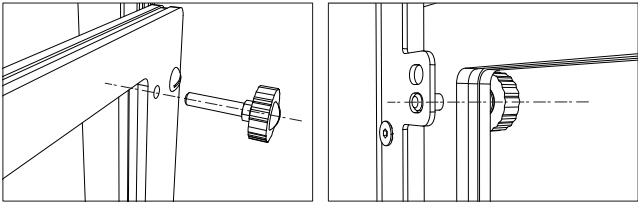
Put the Blade Frame on main board and secure with 4 screws/nuts.

2. PUTTING THE BASE PLATFORM INTO BASEBOARD

Insert the platform into the baseboard and secure them together with the last screw, which keeps your slicing platform secured in position.

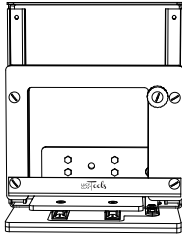


3. SAFETY KNOB SUPPORT INSTALLATION



4. BLADE EDGE BALANCING STEPS

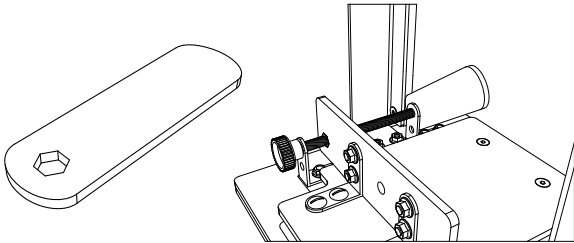
Loosen the 2 screws holding the slicer blade and adjust the gap between the blade's edge and slicing platform making sure the blade is level and evenly touches the span of the platform. Then tighten both screws. **Please watch the video for better understanding.** You can adjust the gap anytime when needed.



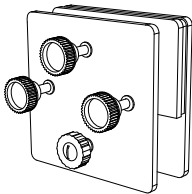
www.lucyclay.com/lcs-manual

TROUBLESHOOTING

The threaded rod should be practically free of any play, but it has to spin easily. Use the supplied key.



LC ANGLE BASE



LC Angle Base was specially developed for LC Slicer and polymer clay technique Mokume Gane and Hidden Magic.

It allows cutting at an angle and filling the gap between the backstop support and the blade to 0.

NOT INCLUDED ORDER SEPARATELY!

**CAN'T FIND SOLUTION FOR YOUR PROBLEM HERE?
PLEASE READ THE ONLINE MANUAL**

SEE INSTRUCTIONS WITH HIGH-RESOLUTION
IMAGES AND WATCH ASSEMBLY VIDEOS

**ASSEMBLY INSTRUCTIONS
FOR LC SLICER**

www.lucyclay.com/lcs-manual



LUCY CLAY®

WE DEVELOP THE TOOLS
YOU CREATE THE ART

FIND MORE ABOUT US

- www.lucyclay.com
- www.lucyclay.com/blog

BUY OUR TOOLS

- www.lucyclay.com/store
- www.amazon.com/lucyclay

STAY IN TOUCH AND FIND OUT
ABOUT THE LATEST NEWS

- www.fb.com/lucyclaytools
- www.fb.com/groups/polymerclaytools
- www.youtube.com/lctools
- www.instagram.com/lucyclaytools
- www.tiktok.com/@lucyclaytools